

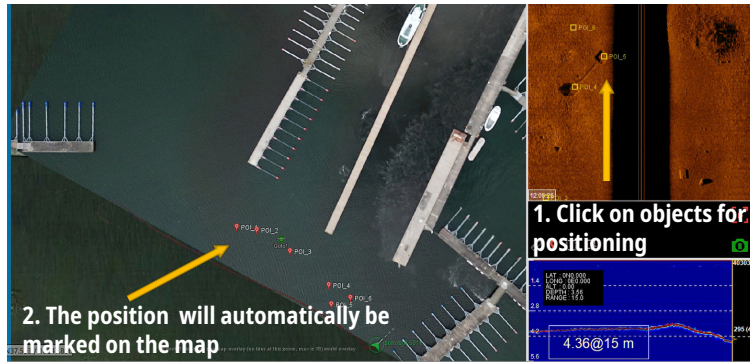


SONOBOT 5 USV

AUTONOMOUS SURFACE VEHICLE

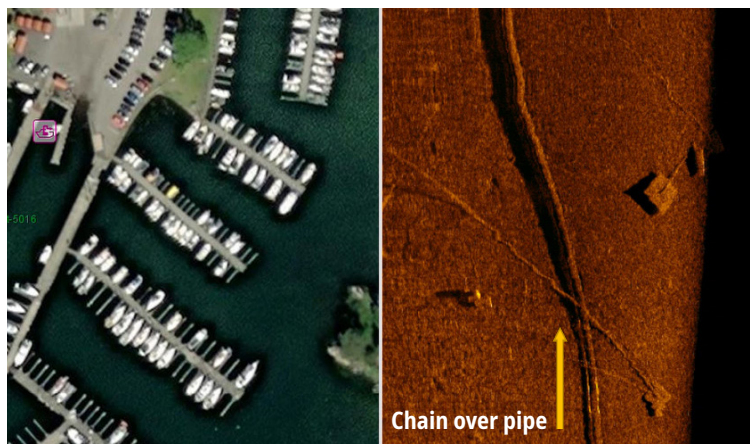
Hydrographic surveys examples

- Bathymetry and seafloor imaging in ports, harbors and inland waters
- Exploring shallow waters, natural reserves, flooded, restricted or hard-to-reach areas
- Regular examinations of underwater infrastructure

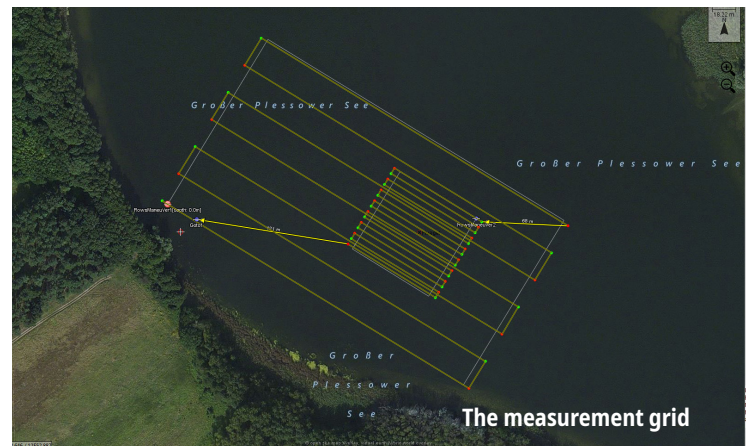


High-precision measurements and recordings

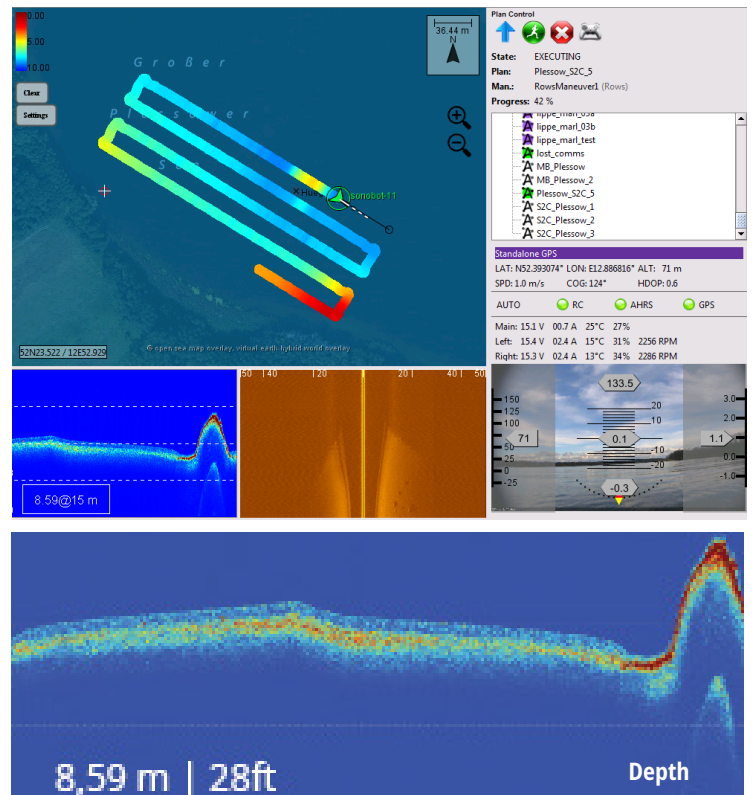
- Different GNSS-options available (DGPS with/without RTK, laser tracking over a total station as well)
- Sonar: 700 kHz side scan sonar (in variable configurations according to customer needs) Available with side scan sonar at 1200 kHz
- HD camera for navigation support, photo- and video recordings



Mission planning



During the mission. Bathymetry and Side-scan sonar live view





Autonomous Surface Vehicle for Hydrographic Surveys

SONOBOT 5 USV

The autonomous SONOBOT was developed to provide surveyors, service providers, and researchers with a smart, lightweight solution for hydrographic surveys and other applications in harbors and inland waters.

Specification Sonobot

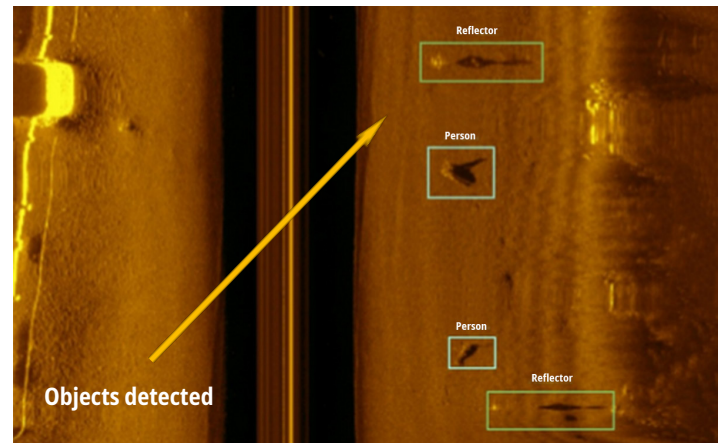
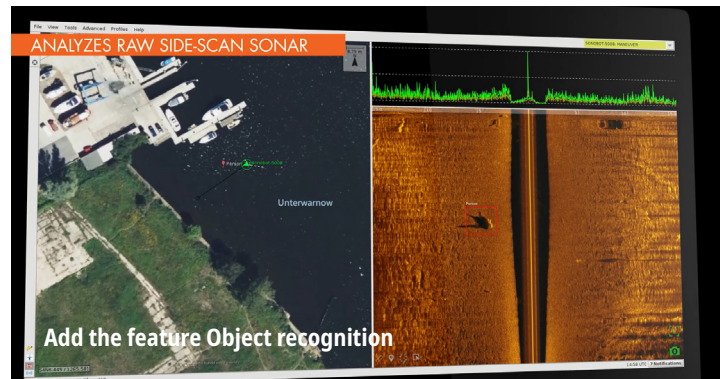
VEHICLE TYPE	Catamaran
DIMENSIONS	H: 805 mm 32" (construction) W: 920 mm 36" L: 1300 mm 51"
DRAFT	120 mm <5" (propeller over keel line) with weed guard
OPERATIONAL WEIGHT	27 kg 59 lbs
TRANSPORT	Complete system in one transport case Fold-out no-tools assembly.
IP RATING	IP 68 for all system components
SYSTEM COMPONENTS	Sonobot USV, field-PC with software, remote control, WLAN-station with tripod and antenna



Flexibility

- Live view 1080p HD forward video camera for operation in remote locations and surveillance
- Fast access to points of interest, accurate maneuvers and efficient area scanning with precisely controllable hydro jet thrusters
- 10 hour duration operations on single battery charge when used at optimum speeds. Hot swappable batteries for unlimited duration operations.
- Software for field operation and data processing with visual georeferenced representation.

Object Recognition



Easy Handling

- Assembly completely without tools
- Can be handled by a single person
- Fits into a car trunk compartment for transport

